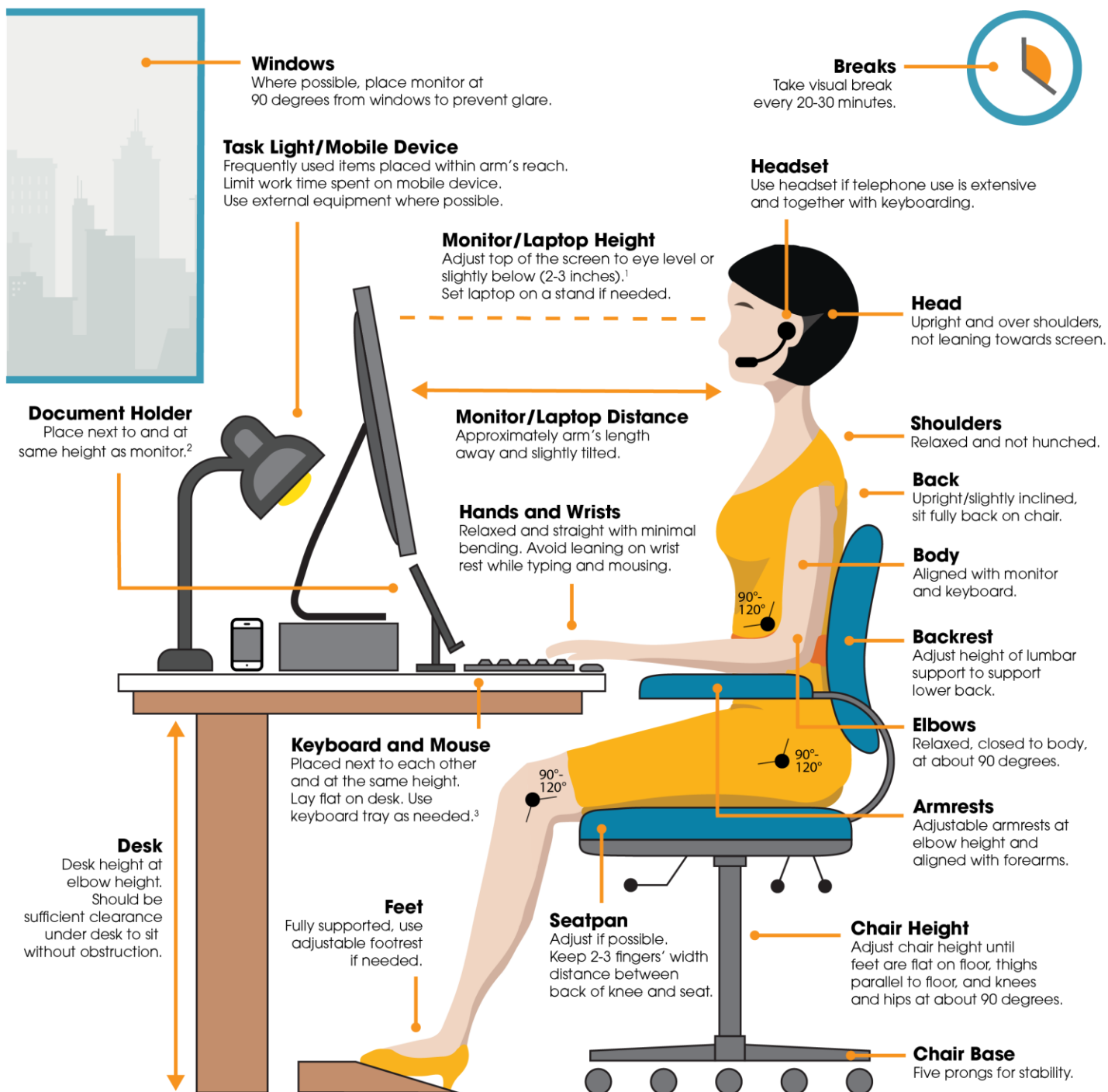


How To Set Up Your Office Workstation



Environmental Health and Safety
Website: <https://ehs.utoronto.ca>
Email: ehs.office@utoronto.ca
Phone: 416.978.4467

¹ Bifocal wearers may need to have screen set slightly lower.
² If using an inline document holder, place it directly below monitor and tilted towards you.
³ If using a keyboard tray, it should be flat or tilted slightly away from you.