

# Parking at Crawford Smith & Swallow Offices



Parking is available at all CSS offices.

Niagara Falls, Fort Erie, Port Colborne and Niagara on the Lake all have open parking whereas the St. Catharines office has permit parking in specific locations.

# Niagara Falls, Fort Erie, Port Colborne and Niagara on the Lake open parking

## **Niagara Falls:**

There is parking available in the lot behind the building. Enter through the driveway on the left of the building and exit driveway on the opposite side of the building.

## **Fort Erie:**

Street parking is available in front of the building and there are 2 spots behind the office.

## **Port Colborne:**

There is parking available in front of the office in the plaza parking lot.

## **Niagara on the Lake:**

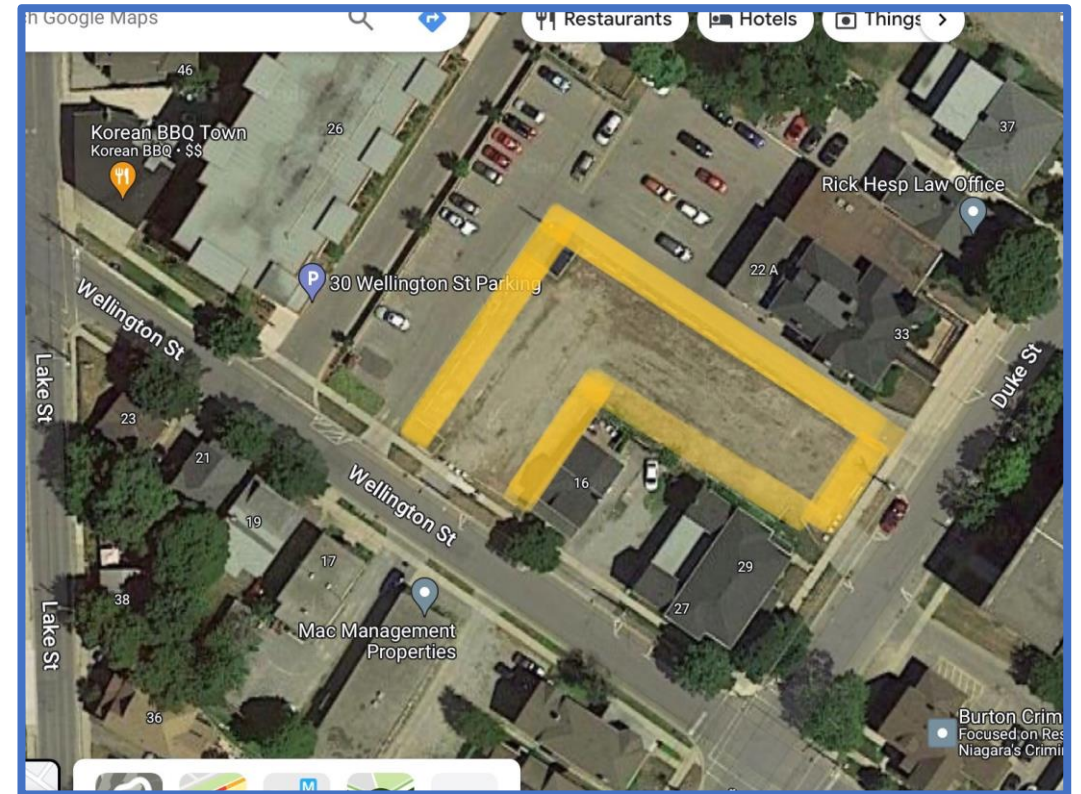
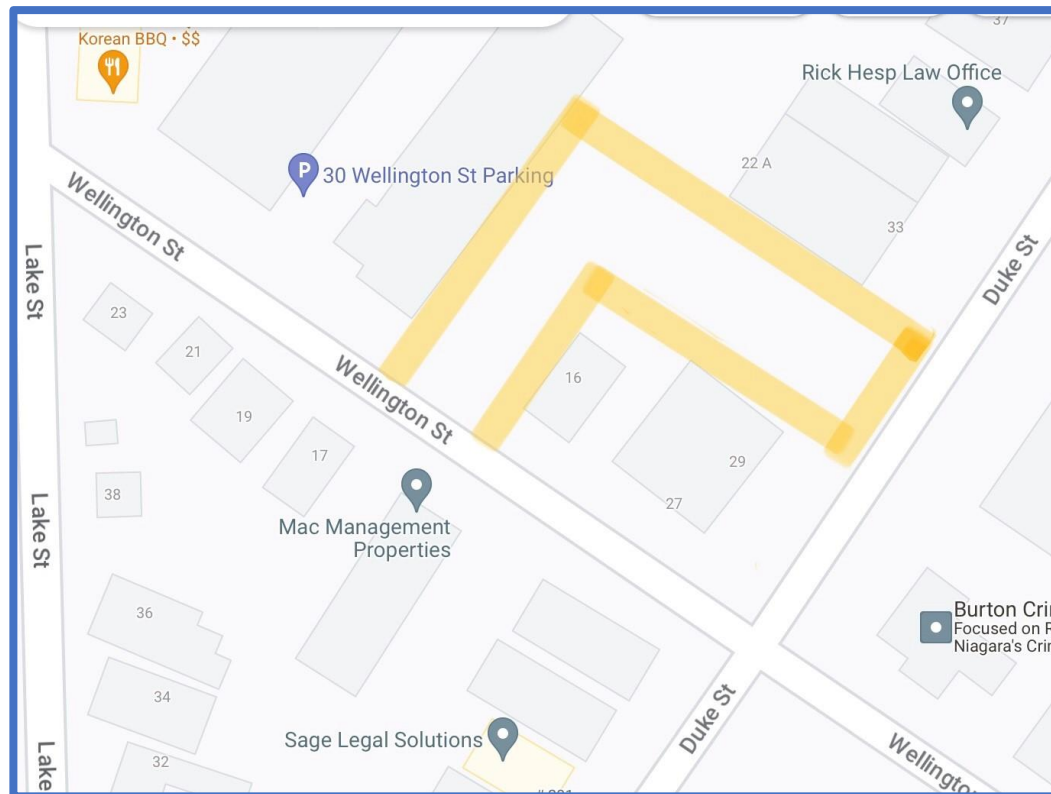
CSS office is located in the Meridian Credit Union building. Parking is available in the lot both beside and behind the building.

# St. Catharines Office Parking #1

The St. Catharines office has permit parking available in two different locations. Please contact Theresa Hill @ [thill@crawfordss.ca](mailto:thill@crawfordss.ca) or phone ext. 3331 for parking passes and additional parking regulation information.

The first option is the gravel lot on Wellington street. If you are travelling from Church street, the entrance will be on the right past Duke Street. You can also enter this lot from Duke Street.

**The parking permit that is provided must be displayed to avoid towing. CSS will not be responsible for towing fees, associated with failure to display the permit as directed.**



# St. Catharines Office Parking #2

For the second option in St. Catharines, there are 6 parking spots available beside Wellington Court restaurant on Wellington Street, along the side of the building (28 Duke Street). If you are assigned one of these spots, a CSS business card must be displayed on your dashboard to avoid towing. You must not block access to the building's rear door (where the white van is in the photo) or you could be towed. CSS will not be responsible for towing fees, associated with failure to display the CSS business card on the dashboard, or failure to park in the designated CSS parking spots.

